

UNIVERSITÉ  
CÔTE D'AZUR



ÉCOLE UNIVERSITAIRE DE RECHERCHE  
ÉCONOMIE ET MANAGEMENT



# Guide for incoming students 2026-2027

For the Bachelor level



Created on March 2022  
Last update : 04/05/2026

# SUMMARY

- I. The International Relations team
- II. Université Côte d'Azur
- III. EUR Economics and Management
- IV. Steps of your application
- V. Online application via MoveOn
- VI. Documents to provide
- VII. Learning Agreement – Courses
- VIII. Learning Agreement – Receiving institution information
- IX. Catalogue of courses
- X. Validation of your application
- XI. Academic calendar 2026-2027 - Provisional – First semester
- XII. Academic calendar 2026-2027 - Provisional – Second semester
- XIII. Housing
- XIV. French courses
- XV. Your arrival to the Campus Saint Jean d'Angely
- XVI. Welcome Days – September 2 and 3

# I. The International Relations team

[eur-elmi.international@univ-cotedazur.fr](mailto:eur-elmi.international@univ-cotedazur.fr)

- **Guilhem Lecouteux:** Vice-Dean, International Affairs Advisor
- **Imène Ben Amor:** Responsible of International Relations Service
- **Jules Azinheirinha:** In charge of Incoming students
- **Luigi Panaccione:** In charge of Outgoing students

## Horaires d'accueil des étudiants / Student opening times (office 254-256)

Lundi / Monday	Mardi / Tuesday	Mercredi / Wednesday	Jeudi / Thursday	Vendredi / Friday
9h30 – 16h30	9h30 – 16h30	9h30 – 16h30	9h30 – 16h30	9h30 – 16h30

## II. Université Côte d'Azur

Université Côte d'Azur is a multi-disciplinary University well known at the international level. It counts about 20% of international students and 2 Campuses in a foreign country.

It replaces the *Université Nice Sophia Antipolis* since 1st January 2020.

It has establishments throughout the Alpes Maritimes:

- Nice
- Sophia Antipolis (Polytech, 25 km from Nice)
- Cannes
- Menton
- Grasse

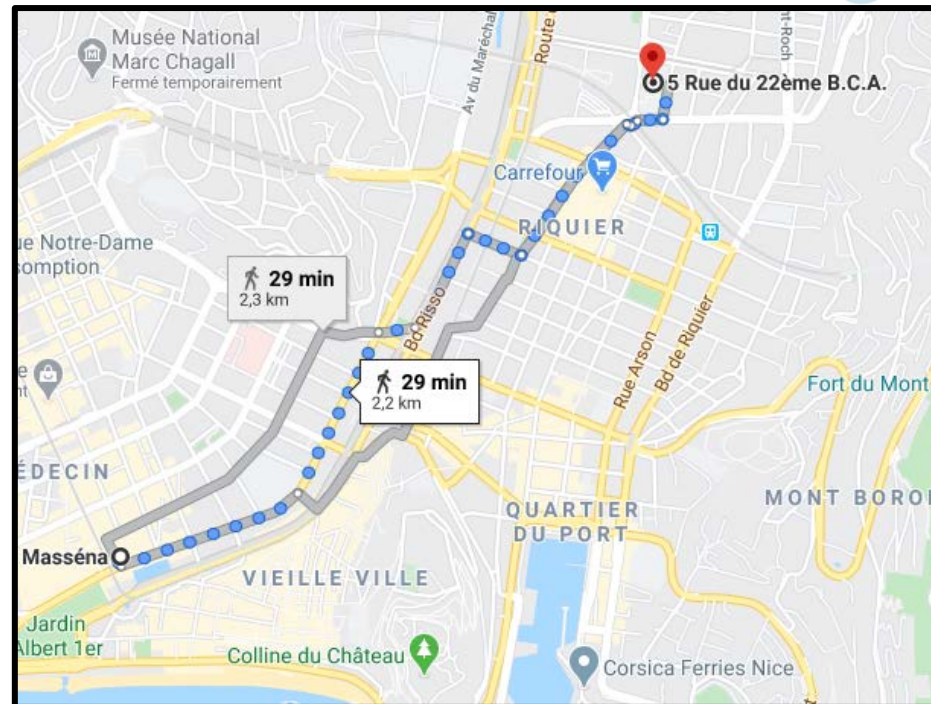
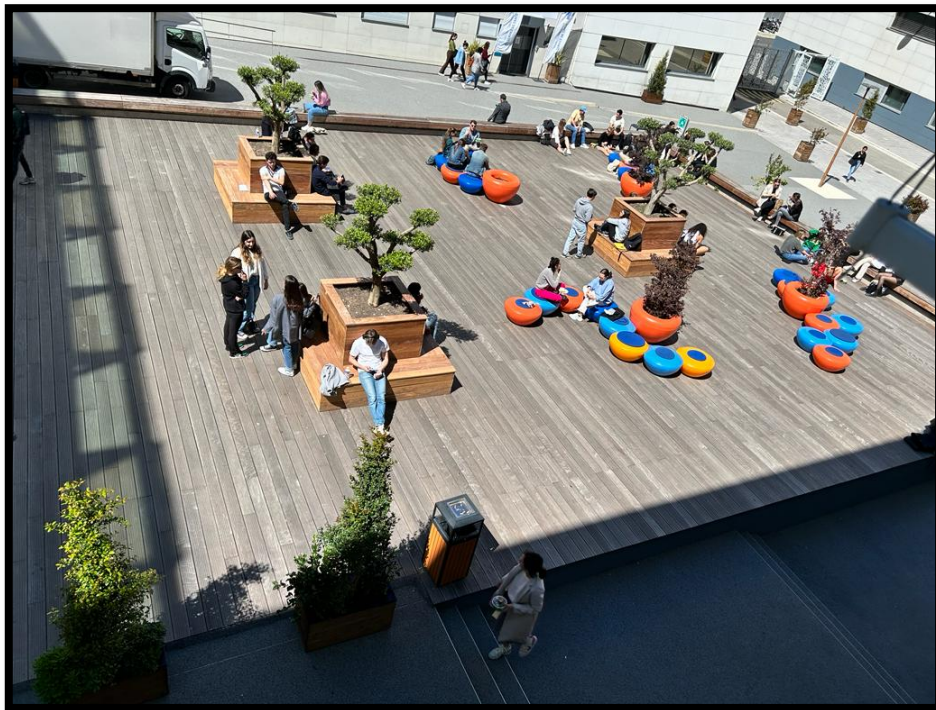
### It is :

- 8 Postgraduate Schools of Research (EUR)
- 1 University Institute of Technology (IUT)
- 1 Faculty of Medicine
- 1 Institute of Business Administration (IAE)
- 1 Higher National Institute of Teaching and Education (INSPE)

### III. The EUR Economics and Management

There are about 3000 students (included 25% of international students) at the **EUR Economics and Management**.

**Address** : Campus de St Jean d'Angely 1, 5 Rue du 22<sup>ème</sup> BCA, 06300 Nice



## IV. Steps of your application

1.Nomination

- Your home university will send your nomination to your International Relations Service.

Documents to  
prepare

- You will receive an e-mail from the International Relations Service to explain you how to proceed for the application.

Arrival at Nice

- Present to the International Relations Service for your administrative and pedagogical registrations.



**Academic residences (private or public) are independent from the University (see diapositive about housing)**

## V. Online application via MoveOn

- It is mandatory to register on our online portal MoveOn :
- English version: <https://univcotedazur.moveonfr.com/form/64a67e6cdf80c8a69a08548d/eng>
- French version: <https://univcotedazur.moveonfr.com/form/64a67e6cdf80c8a69a08548d/fra>
- Then, you will have to fill the Mobility application form for incoming students. This where you will have to upload all the documents for your application.
- **Beware, you have to select Ecole de Recherche Universitaire ELMI – Economie et Management so that we receive your application !**
- Don't forget to click on « **Submit your application** », only once you have completed the form and add all the documents requested !

## VI. Documents to provide

- Copy of **passport (mandatory for non UE citizens and residence permit of the sending country) or VALID identity card for UE citizens**
- **Certification of level B2** (if you don't have an official certification, we also a document from your home university stating that you have B2 level) :
  - In French if you take courses in French
  - In English if you take courses in English
  - In French and English if you take courses in French and in English
- Proof of **Health insurance** for the whole period of mobility :
  - **European Health Insurance Card** for UE/EEE or a **proof of health insurance if you do not come from UE**
  - **Form SE 401 – Q106 for Quebecers**
  - **Students from another country (Ex. Turkey) will have to register to the French Health insurance as soon as they arrive in Nice.**
- **Learning Agreement** (see page next pages)
- **Application Housing and French Courses (document sent by email)**
- For other documents asked on MoveOn but which are not in this list, you can submit an empty page.



# VII. Learning Agreement - Courses

Respect the semester of your mobility :

- Semestre 1: you can pick courses from « **Semestre 1, 3 or 5** »
- Semestre 2: you can pick courses from « **Semestre 2, 4 or 6** »

It is mandatory to indicate the code for each course on your LA :

- You can find the code of the course on the catalogue



Higher Education  
Learning Agreement for Studies

Academic Year 2022/2023

Student	Last name(s)	First name(s)	Date of birth	Nationality <sup>1</sup>	Sex [M/F]	Study cycle <sup>2</sup>	Field of education <sup>3</sup>
Sending Institution							
Receiving Institution							

Before the mobility

Study Programme at the Receiving Institution				
Planned period of the mobility: from [month/year] to [month/year]				
Table A	Component <sup>4</sup> code (if any)	Component title at the Receiving Institution (as indicated in the course catalogue <sup>7</sup> )	Semester [e.g. autumn/spring; term]	Number of ECTS credits (or equivalent) <sup>8</sup> to be awarded by the Receiving Institution upon successful completion
	.EECS	Econométrie	Autumn term	2

- **Attention:** when you see CT+CC (example below) that means that the course includes a TD (tutorial). Attendance is mandatory and taken for the TD.

**exemple:**

LICENCE 1ère ANNEE ECONOMIE - GESTION						
SEMESTRE 1 - 1er septembre - mi janvier						
Nature ELP - Nature of Educational element	Libellé ELP - Title of Educational element	Langue d'enseignement - Language of course	Type de contrôle - Evaluation mode	Code ELP syllabus (lien) - Syllabus link	Code cours - Component/ courses code	ECTS
UE Fondamentales - UE Fundamental						jusqu'à - up to 12 ECTS
Unité d'enseignement - Teaching Unit	Principes d'économie 1					
Elément constitutif d'une UE - Constituent element of TU	Macroéconomie 1	Français	CC & CT	<a href="https://syllabus.univ-cotedazur.fr/fr/course/router-light/PEMAC1">https://syllabus.univ-cotedazur.fr/fr/course/router-light/PEMAC1</a>	PEMAC1	3

## VIII. Learning Agreement – Receiving institution information

You will find below information regarding how to fill the part Receiving Institution of your Learning Agreement :

- **Name** : Université Côte d'Azur
- **Faculty/department** : EUR Economics and Management
- **Erasmus code** : F NICE 42
- **ISCED Codes** : 311 Economics / 041 Business administration
- **Address** : 5 rue du 22e BCA, 06300 Nice
- **Country** : France
- **Contact person** : LECOUTEUX Guilhem, [eur-elmi.international@univ-cotedazur.fr](mailto:eur-elmi.international@univ-cotedazur.fr)

**Your Online Learning Agreement must be validated by your home university and sent via EWP.**

**If your home university is not connected to EWP, your Learning Agreement BEFORE the Mobility signed and stamped by your home university must be sent by email to [eur-elmi.international@univ-cotedazur.fr](mailto:eur-elmi.international@univ-cotedazur.fr)**

## IX. Catalogue of courses

- The catalogue of courses is available on our website :  
<https://elmi.univ-cotedazur.fr/international/venir-etudier/programme-de-mobilite>

### Catalogue des cours en Licence

[Licence 1 - Semestre 1](#)

[Licence 1 - Semestre 2](#)

[Licence 2 - Semestre 3](#)

[Licence 2 - Semestre 4](#)

[Licence 3 - Semestre 5](#)

[Licence 3 - Semestre 6](#)

[Mineures](#)

# X. Validation of your application

Your application is validated once your file is complete. You will receive an email of confirmation with the letter of acceptance.

The documents below are VERY important for **non UE Citizens** in order to make the request of **VISA D (Visa for students )** to the French Embassy of your home country

## Letter of acceptance for UE students

					
<b>Letter of Acceptance Erasmus + 2020-2021 from Graduate School and Research of Economics and Management- F NICE 42</b>					
In the framework of Erasmus + Mobility for academic year 2020/2021, ELMI, Graduate School and Research of Economics and Management of the Université Côte d'Azur (F NICE 42) will accept the following student:					
Surname + Name	Date	Sex	Nationality	Email	Period Months
	05/01/2000	F	REPUBLICA MOLDOVA		6 months winter semester: 1st september 2020-15th january 2021
RECEIVING University	ERASMUS + CODE	Contact Details			
Université Côte d'Azur de Nice - Graduate School of Economics and Management (ELMI) Service des Relations Internationales, Université Côte d'Azur, Campus St Jean d'Angely 1, 5 rue du 23 <sup>ème</sup> BCA, 06357 Nice Cedex 4 (France)	F NICE 42	International Relations Office: <a href="mailto:eur-elmi.international@univ-cotedazur.fr">eur-elmi.international@univ-cotedazur.fr</a>			
SENDING University	ERASMUS + CODE	Contact Details			
Universitè de Craiova	RO CRAIOVA 01	Erasmus Coordinator :			

## Letter of acceptance for outside UE students

Service des Relations Internationales,  
[eur-elmi.international@univ-cotedazur.fr](mailto:eur-elmi.international@univ-cotedazur.fr)

Objet : LETTRE D'ACCEPTATION HORS EUROPE

A Nice, le

Nous avons le plaisir de vous informer que l'étudiant (e) ..., N° passeport : ..... est admis(e) dans notre établissement pour l'année universitaire 2020/2021 dans le cadre du programme d'échange « Accord Bilatéral » entre l'Université .... et Université Côte d'Azur.

A titre indicatif, voici les dates de l'année universitaire 2020/2021 :

Début des cours du 1 <sup>er</sup> semestre	1 <sup>er</sup> septembre 2020
Fin du 1 <sup>er</sup> semestre :	
Début des cours du 2 <sup>ème</sup> semestre	21 janvier 2021
Fin du 2 <sup>nd</sup> semestre :	30 juin 2021

Vous pourrez avoir accès à la liste des cours et autres informations concernant la Graduate School and Research of Economics and Management sur notre site internet <https://elmi.univ-cotedazur.fr>

Si toutefois vous aviez besoin de renseignements supplémentaires, n'hésitez pas à nous contacter par mail : [eur-elmi.international@univ-cotedazur.fr](mailto:eur-elmi.international@univ-cotedazur.fr)

Veuillez agréer, Cher(e) étudiant(e), l'expression de nos salutations les meilleures.

# XI. Academic calendar 2026-2027 - Provisional – First semester

Septembre			Octobre			Novembre			Décembre			Janvier		
1 M	36	Période enjeux Portail EG	1 J	Enseignement	1 D	Sem. 8 Enseignement	1 M	Sem. 12 Enseignement	1 V	Sem. 13 Enseignement	1 V	Période d'examens semestres impairs	1 V	
2 M			2 V		2 L		2 M		2 S		2 S			
3 J			3 S		3 M		3 J		3 D		3 D			
4 V			4 D		4 M		4 V		4 L		4 L			
5 S		5 L	Sem. 5 Enseignement	5 J	Sem. 9	5 S	Epreuves Comp. Trans.	5 M	Sem. 14 Enseignement	5 M	Période d'examens semestres pairs	5 M		
6 D	6 M	6 V		6 V		6 D		6 M						
7 L	37	Début des cours	7 M	Sem. 6 Enseignement	7 S	Sem. 10 Enseignement	7 L	Epreuves Comp. Trans.	7 J	Sem. 11 Enseignement	7 J		7 J	
8 M			8 J		8 D		8 M		8 V		8 V			
9 M	38	Sem. 1 Enseignement	9 V	Sem. 7 Enseignement	9 L	Sem. 11 Enseignement	9 M	Epreuves Comp. Trans.	9 S	Sem. 12 Enseignement	9 S		9 S	
10 J			10 S		10 M		10 J		10 D		10 D			
11 V	39	Sem. 2 Enseignement	11 D	Sem. 4	11 M	Sem. 12 Enseignement	11 V	Epreuves Comp. Trans.	11 L	Sem. 13 Enseignement	11 L	Période d'examens semestres impairs	11 L	
12 S			12 L		12 J		12 S		12 M		12 M			
13 D	40	Sem. 3 Enseignement	13 M	Sem. 3 Enseignement	13 V	Sem. 13 Enseignement	13 D	Epreuves Comp. Trans.	13 M	Sem. 14 Enseignement	13 M		13 M	
14 L			14 M		14 L		14 L		14 J		14 J			
15 M	41	Sem. 4	15 J	Sem. 2 Enseignement	15 D	Sem. 14 Enseignement	15 M	Epreuves Comp. Trans.	15 V	Sem. 15 Enseignement	15 V		15 V	
16 M			16 V		16 L		16 M		16 S		16 S			
17 J	42	Sem. 5 Enseignement	17 S	Sem. 1	17 M	Sem. 15 Enseignement	17 J	Epreuves Comp. Trans.	17 D	Sem. 16 Enseignement	17 D		17 D	
18 V			18 D		18 M		18 V		18 L		18 L			
19 S	43	Sem. 6 Enseignement	19 L	Sem. 6 Enseignement	19 J	Sem. 16 Enseignement	19 S	Epreuves Comp. Trans.	19 M	Sem. 17 Enseignement	19 M	Sem. 1 Enseignement	19 M	
20 D			20 M		20 V		20 D		20 M		20 M			
21 L	44	Sem. 7 Enseignement	21 M	Sem. 7 Enseignement	21 S	Sem. 17 Enseignement	21 L	Epreuves Comp. Trans.	21 J	Sem. 18 Enseignement	21 J		21 J	
22 M			22 J		22 D		22 M		22 V		22 V			
23 M	45	Sem. 8 Enseignement	23 V	Sem. 8 Enseignement	23 L	Sem. 18 Enseignement	23 M	Epreuves Comp. Trans.	23 S	Sem. 19 Enseignement	23 S	Sem. 2 Enseignement	23 S	
24 J			24 S		24 M		24 J		24 D		24 D			
25 V	46	Sem. 9 Enseignement	25 D	Sem. 9 Enseignement	25 M	Sem. 19 Enseignement	25 V	Epreuves Comp. Trans.	25 L	Sem. 20 Enseignement	25 L		25 L	
26 S			26 L		26 J		26 M		26 S		26 M			
27 D	47	Sem. 10 Enseignement	27 M	Sem. 10 Enseignement	27 V	Sem. 20 Enseignement	27 D	Epreuves Comp. Trans.	27 M	Sem. 21 Enseignement	27 M		27 M	
28 L			28 M		28 S		28 L		28 J		28 J			
29 M	48	Sem. 11 Enseignement	29 J	Sem. 11 Enseignement	29 D	Sem. 21 Enseignement	29 M	Epreuves Comp. Trans.	29 V	Sem. 22 Enseignement	29 V		29 V	
30 M			30 V		30 L		30 M		30 S		30 M			
	49	Sem. 12 Enseignement	31 S	Sem. 12 Enseignement		Sem. 22 Enseignement	31 J	Epreuves Comp. Trans.	31 D	Sem. 23 Enseignement	31 D		31 D	

➤ Opening of the International Relations Service:

24/08/2026

➤ Start of the courses for the 1st semester: 07/09/2026

➤ Start of the courses for the 2<sup>nd</sup> semester: 18/01/2027

➤ Period of exams :

• Exams for the 1st semester : From 04/01/2027 to 15/01/2027

• Exams for the 2<sup>nd</sup> semester : From 26/04/2027 to 14/05/2027

• Retake session : From 15/06/2027 to 30/06/2027

## XII. Academic Calendar 2026-2027 - Provisional – Second semester

Janvier		Février		Mars		Avril		Mai		Juin		Juillet	
1 V		1 L		1 L		1 J		1 S		1 M		1 J	
2 S		2 M		2 M		2 V		2 D		2 M		2 V	
3 D		3 M	5 Sem. 3 Enseignement	3 M	9 Pause pédagogique	3 S		3 L	Epreuves Comp. Période examens	3 J	22	3 S	
4 L		4 J		4 J		4 D		4 M		4 V		4 D	Fin des enseignements*
5 M		5 V		5 V		5 L		5 M	18	5 S		5 L	
6 M	1 Période d'examens semestres impairs	6 S		6 S		6 M		6 J		6 D		6 M	
7 J		7 D		7 D		7 M	14 Sem. 11 Enseignement	7 V		7 L		7 M	27
8 V		8 L		8 L		8 J		8 S		8 M		8 J	
9 S		9 M	Période jury S1 Sem. 4 Enseignement	9 M		9 V		9 D		9 M	23	9 V	
10 D		10 M		10 M	10 Sem. 7 Enseignement	10 S		10 L		10 J		10 S	
11 L		11 J		11 J		11 D		11 M	Epreuves Comp. Période examens sem. pairs	11 V	11/06 : date limite de jury S2 + annuel*	11 D	
12 M	2 Période d'examens semestres impairs	12 V		12 V		12 L		12 M	19 Sem. 12 Enseignement	12 S		12 L	Période jury Session 2 + annuel
13 M		13 S		13 S		13 M		13 J		13 D		13 M	
14 J		14 D		14 D		14 M	15	14 V		14 L		14 M	28
15 V		15 L		15 L		15 J		15 S		15 M	Epreuves Comp. Période d'examens (Session 2)	15 J	
16 S		16 M		16 M		16 V		16 D		16 M	24	16 V	
17 D		17 M	7 Sem. 5 Enseignement	17 M	11 Sem. 8 Enseignement	17 S		17 L		17 J		17 S	
18 L		18 J		18 J		18 D		18 M		18 V		18 D	
19 M		19 V		19 V		19 L		19 M	20 Festivités printanières	19 S		19 L	
20 M	3 Sem. 1 Enseignement	20 S		20 S		20 M		20 M		20 D		20 M	
21 J		21 D		21 D		21 J	16 Sem. 13 Enseignement	21 V		21 L		21 M	29
22 V		22 L		22 L		22 J		22 S		22 M		22 J	
23 S		23 M		23 M		23 V		23 D		23 M	25 Epreuves Comp. Période d'examens (Session 2)	23 V	
24 D		24 M	8 Sem. 6 Enseignement	24 M	12 Sem. 9 Enseignement	24 S		24 L	Examen LAS	24 J		24 S	
25 L		25 J		25 J		25 D		25 M		25 V		25 D	
26 M		26 V		26 V		26 L		26 M	21	26 S		26 L	
27 M	4 Sem. 2 Enseignement	27 S		27 S		27 M		27 J		27 D		27 M	
28 J		28 D		28 D		28 M	17 Période d'examens semestres pairs	28 V		28 L		28 M	30
29 V		29 L		29 L		29 J		29 S		29 M		29 J	
30 S		30 M		30 M	13 Sem. 10 Enseignement	30 V		30 D		30 M	Examens session 2	30 V	
31 D		31 M		31 M		31 L		31 L		31 M		31 S	

➤ Opening of the International Relations Service:

24/08/2026

➤ Start of the courses for the 1st semester: 07/09/2026

➤ Start of the courses for the 2<sup>nd</sup> semester: 18/01/2027

➤ Period of exams :

- Exams for the 1st semester : From 04/01/2027 to 15/01/2027

- Exams for the 2<sup>nd</sup> semester : From 26/04/2027 to 14/05/2027

- Retake session : From 15/06/2027 to 30/06/2027

**No retake session for the TD, CC and CCI**

## XIII. Housing

### A) CROUS – Public Academic residences

Public Academic residences are administered by **CROUS (Centre Régional des Œuvres Universitaires et Scolaires) de Nice-Toulon**, **NOT by UNIVERSITY**. However, we will help you with the process of application for a room.

If you wish to apply for an university room of the CROUS, you have create an account on the folowing link :

<https://www.messervices.etudiant.gouv.fr/envole/enregistrement>

Once your account created, a provisional INE (National Student Identifier) will be given to you. Next, you will have to **communicate this INE on the document Application Housing and French courses**.

We will then communicate your information to the CROUS, and we will keep you informed as soon as we have an answer regarding the allocation of rooms.

**Beware ! Application to an university room does not guarantee to get one. Please keep on looking for an accomodation on your side.**

It is also possible to search for an **individual accomodation**. You will have to do this research before your arrival in Nice. **The search for accomodation is not easy** : rents are high, places are rares ( **from 600€/ month**, depending on the type of accomodation sought).



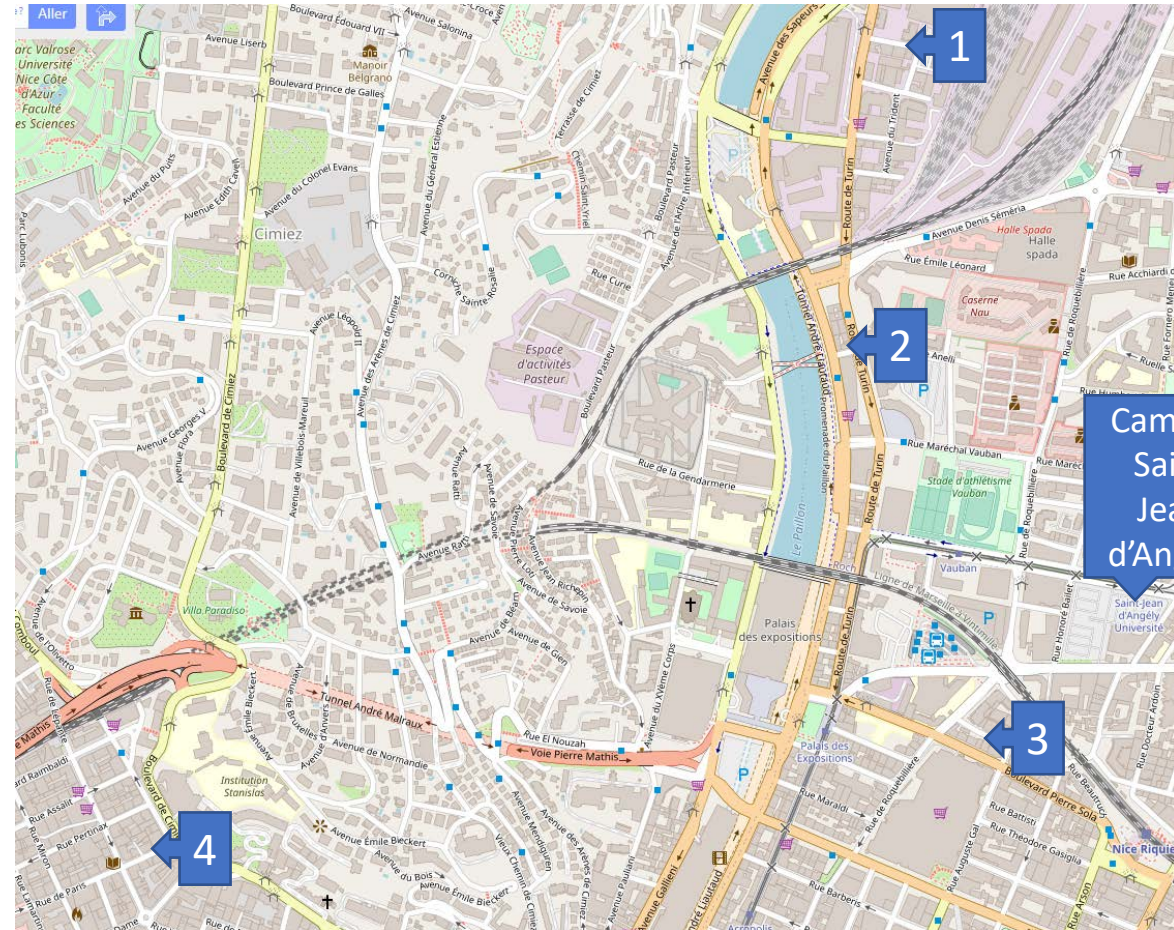
## *B/Other possibilities of accomodation*

- <https://univ-cotedazur.studapart.com/fr/register/student>
- On this website partner with our university, you will find ads for studios, rooms in shared accomodations, homestays...
- The accommodation is booked online, online assistance 6/7 days, English version available.
- 250 euros booking fee.



## Some of the private residences near the campus

1. City résidence Nice	3 impasse Guidotti, 06300 Nice
2. Le Vélasquez	5 rue de Fontan, 06300 Nice
3. Studéa Riquier	3 chemin Sorgentino, 06300 Nice
4. Alliance Française Nice Côte d'Azur	1 rue de Paris, 06000 Nice



## Some useful links to help you with your housing search:

- <https://www.lokaviz.fr/> (Student accommodation in private homes)
- <https://af-nice.fr/fr/hebergement-residence/> (The Alliance française offers several kinds of student housing)
- <https://www.morningcroissant.fr/> (Short-term housing rental)
- <https://www.appartcity.com/fr/> (Short and long-term apartments rental)
- [auberge jeunesse nice - Recherche Google](#) (To find a youth hostel in Nice)



## XIV. French courses

- The Direction of international development and Europe offers French courses for exchange students.
- These courses are optional and do not earn ECTS credits. It doesn't have to appear on your Learning Agreement.
- So that every student can participate, registration is possible for one semester only.
- If you wish to register, you have to indicate your current level, with a certification if possible.
- **You will have to indicate on the document Application Housing and French courses if you wish to follow these courses or not.**



# XV. Your arrival to the Campus Saint Jean d'Angely

## A) Administrative registration

1. You must go to the International Relations Service (office 254/256 see opening times page 3)
2. Bring your Certificate of Arrival only if your home university required it
3. Non UE citizens have to register to the French Health insurance as soon as they arrive in Nice if they do not have an European Health Insurance Card.



## B) Pedagogical registration

**GOOD TO KNOW:** You can make changes of courses if needed during the 15 first days after the beginning of the courses (*Learning Agreement DURING the Mobility*).

A form « Inscription pédagogique » will be handed at your arrival for your definitive registration to course.

**No change of courses will be accepted after having handed the form).**

**During the Mobility – Pendant la mobilité**

Exceptional changes to Table A  
(to be approved by e-mail or signature by the student, the responsible person in the Sending Institution and the responsible person in the Receiving Institution)  
Modifications exceptionnelles apportées au tableau A  
(à approuver par mail ou à faire signer par l'étudiant et les personnes responsables dans les établissements d'envoi et d'accueil)

Table A2 During the mobility Tableau A2 Pendant la mobilité	Component code (if any) Référence de la composant e pédagogiq ue (si existante)	Component title at the Receiving Institution (as indicated in the course catalogue) Intitulé de la composante pédagogique dans l'établissement d'accueil (tel qu'indiqué dans le catalogue de cours)	Deleted component [tick if applicable] Composante supprimée [cochez le cas échéant]	Added component [tick if applicable] Composante ajoutée [cochez le cas échéant]	Reason for change <sup>12</sup> Raison du changement	Number of ECTS credits (or equivalent) Nombre de crédits ECTS (ou de crédits équivalents)
			<input type="checkbox"/>	<input type="checkbox"/>	Choose an item.	
			<input type="checkbox"/>	<input type="checkbox"/>	Choose an item.	

Exceptional changes to Table B (if applicable)

<sup>12</sup> Reasons for exceptional changes to study programme abroad (choose an item number from the table below):

*Reasons for deleting a component*

*Reason for adding a component*

1. Previously selected educational component is not available at the Receiving Institution
2. Substituting a deleted component
3. Component is in a different language than previously specified in the course catalogue
4. Extending the mobility period
5. Timetable conflict
6. Other (please specify)
7. Other (please specify)
8. Other (please specify)

## XVI. Welcome Days – September 2 and 3

- 1) On September 2, we will organize an information meeting about your mobility. **Your attendance to this meeting is mandatory !** Details (hour, room...) will be sent later.
- 2) Information regarding the day of September 3 will be sent soon by email.



UNIVERSITÉ  
CÔTE D'AZUR



ÉCOLE UNIVERSITAIRE DE RECHERCHE

ÉCONOMIE ET MANAGEMENT

For more information about our university you can visit our website :

<https://univ-cotedazur.eu/attending-universite-cote-dazur/attending-as-a-student>

**International Relations Office contact :**  
**[eur-elmi.international@univ-cotedazur.fr](mailto:eur-elmi.international@univ-cotedazur.fr)**